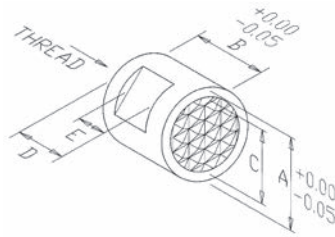
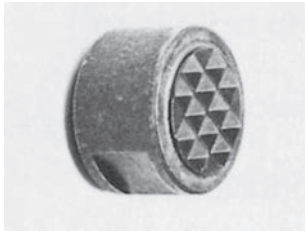


# Replaceable Gripper Inserts

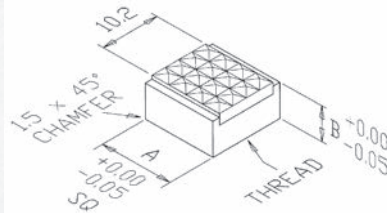
## Suitable for Chuck Jaws and Fixtures

### Carbide Tipped Round Design



THAME PART No.	A	B	C	D	E	TAPPED
EU 2A	12.7	9.5	9.5	6.7	4.7	M6
EU 2B	12.7	12.7	9.5	8.3	4.7	M6
EU 2C	12.7	16.5	9.5	9.9	4.7	M6
EU 5A	15.9	9.5	12.7	6.7	4.7	M6
EU 6A	19.0	9.5	15.9	6.7	4.7	M6

### Carbide Tipped Square Design

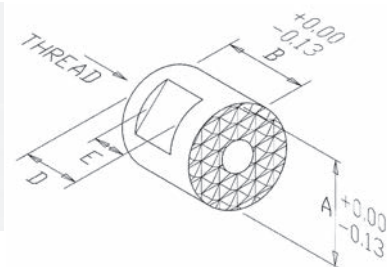
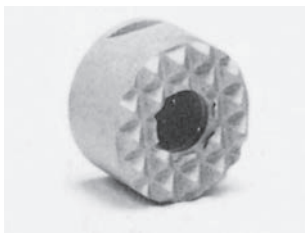


THAME PART No.	A	B	TAPPED
EU 7A	12.7	9.5	M6

- Carbide gripping faces for long life
- Cost effective—just replace insert when worn
- Diamond point gripping serrations for positive grip
- Can be used with special jaws or soft jaws

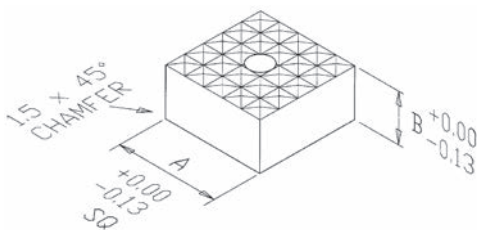
Gripper inserts are retained by either set screw from side to flat on o.d. of gripper or by cap screw from back.

### Hardened Tool Steel-Round Design



THAME PART No.	A	B	C	D	TAPPED
EW 10	12	10	6.8	4.7	M5 x 0.8
EW 15	12	12	8.4	4.7	M5 x 0.8
EW 20	16	10	6.8	4.7	M6 x 1.0
EW 25	20	10	6.8	4.7	M6 x 1.0
EW 30	25	10	6.8	4.7	M6 x 1.0

### Square Design



THAME PART No.	A	B	TAPPED
EW 40	12	10	M5 x 0.8

- Hardened tool steel grips for high shock load when loading or unloading.

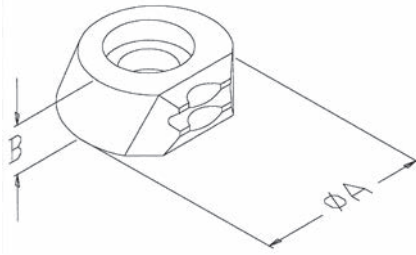
# Replaceable Gripper Inserts

## Suitable for Chuck Jaws and Fixtures

### Hardened High Speed Steel - O.D. Grip Design



Inclusive of socket head screw

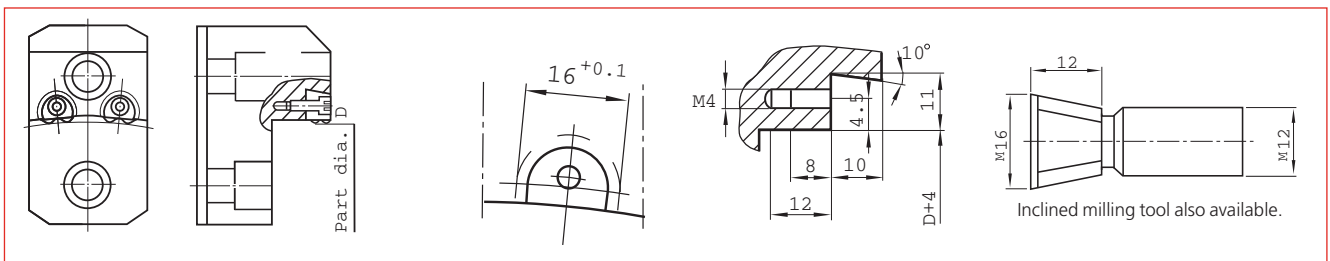


- Unique shape for OD or ID Gripping.
- Top mounting of bolt.
- Can be used for self-centering or pivoting.
- Pull down effect by wedge shape design.
- Inclined cutter easily machines seating pocket.

THAME PART No.	A	B
EZ 05	16	10

#### Mounting Instructions:

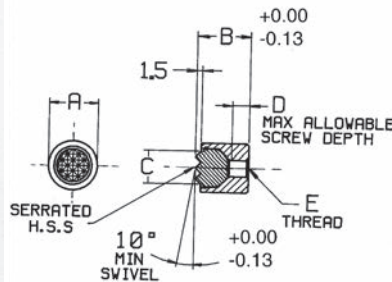
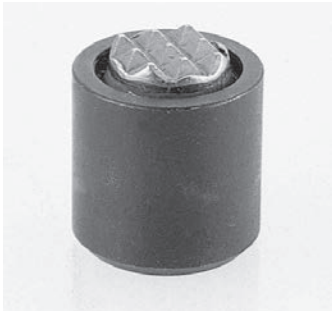
1. Part  $\varnothing + 4\text{mm}$  (0.16 inch) + seat turning or milling.
2. Milling of pocket + drilling and tapping.



# Pivoting Gripper Ball Units

## Suitable for Chuck Jaws and Fixtures

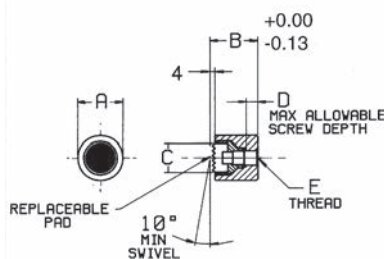
### Hardened Tool Steel Ball Types



THAME PART No.	A	B	C	D	TAPPED
EY 05	10	12	6	3.5	M4 x 0.7
EY 10	10	25	6	9.0	M4 x 0.7
EY 15	13	16	8.5	6.5	M5 x 0.8
EY 20	13	25	8.5	9.0	M5 x 0.8

Self aligning grippers that adjust to the workpiece draft angle or irregular surface giving secure workholding.

### Hardened Tool Steel Pad Types



THAME PART No.	A	B	C	D	TAPPED
EX 05	19	24	12	8.5	M8 x 1.25
EX 10	24	28	16	9.0	M10 x 1.50
EX 15	30	30	20	8.5	M12 x 1.75
EX20	36	36	25	12	M12 x 1.75

Carbide or Flat Pad on request.

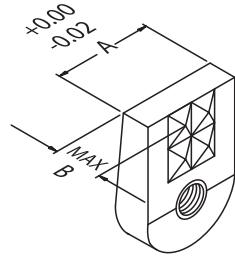
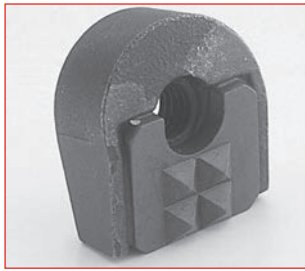
#### THAME WORKHOLDING

Field End, Thame Road, Long Crendon, Aylesbury, Bucks, HP18 9EJ England  
 Telephone: + 44 (0)1844 208050 Fax: + 44 (0)1844 201699  
 E-mail: sales@thameworkholding.com Web: www.thameworkholding.com

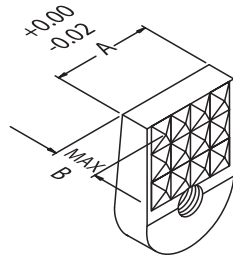
# Replaceable Gripper Inserts

## Suitable for Chuck Jaws and Fixtures

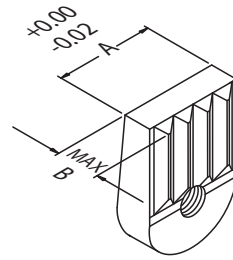
### Carbide or Hardened Tool Steel - Angle Grip Design



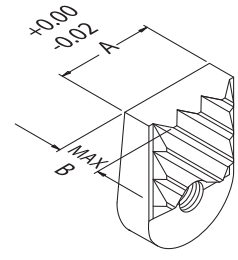
**4 Point**



**12 Point**

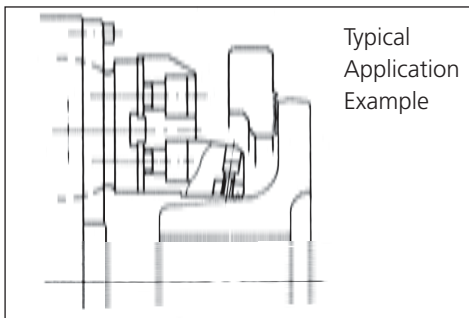


**Straight**



**Angular**

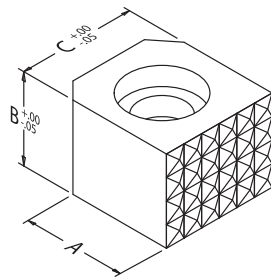
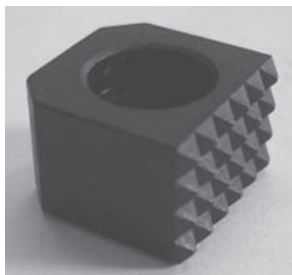
- Ideal for Pull Back Chucks
- Carbide or Hardened Tool Steel



- Ideal for Pull Back Chucks
- Carbide or Hardened Tool Steel

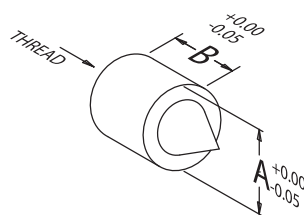
THAME PART No.	A	B	TAPPED	MATERIAL	TOOTH PATTERN
EU 60	14.27	9.5	M5 x 0.8	CARBIDE	4-Point
EU 65	14.27	9.5	M5 x 0.8	CARBIDE	12-Point
EU 70	14.27	9.5	M5 x 0.8	CARBIDE	Straight
EU 75	14.27	9.5	M5 x 0.8	CARBIDE	Angular
EW 60	14.27	9.5	10-32 UNF	HARDENED TOOL STEEL	4-Point

### Hardened High Speed Tool Steel Edge Grippers



THAME PART No.	A SQUARE	B	TAPPED	D
EW 70	12	6	M4 x 4.06	2.3 x 45°
EW 71	12	10	M4 x 4.06	2.3 x 45°
EW 72	12	12	M4 x 4.06	2.3 x 45°
EW 73	20	6	M8 x 5.08	3.2 x 45°
EW 74	20	12	M8 x 5.08	3.2 x 45°

### Hardened Tool Steel-Round Design



THAME PART No.	A	B	TAPPED
EW 80	6.4	9.5	8-32 UNF
EW 81	6.4	12.7	8-32 UNF
EW 82	12.7	9.5	10-32 UNF
EW 83	12.7	12.7	10-32 UNF